

# Big Data Institute



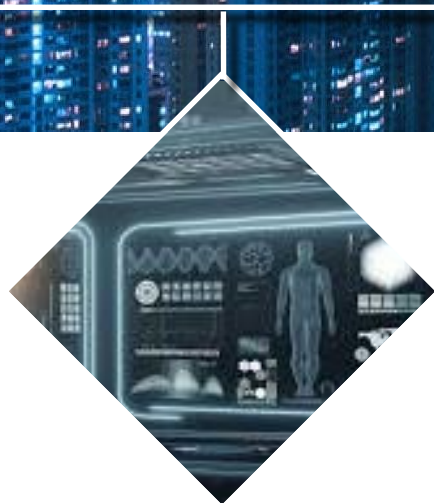
**Educational Programs**

**Big Data Institute**  
**Hong Kong and nation's**  
**Big Data Research Center**

**Technology Transformation**



**Funding Support**



**Industry Applications**



**Scientific Research**



**Talent Training**

**Recruit**  
talents in  
academia  
**Navigate**  
research  
development

**Industrialize**  
scientific  
achievements and  
create long-term  
impact to the world  
**Aspire** innovation  
and breakthrough

**Benefit** the  
Greater Bay Area  
(HK / Macau /  
Guangdong),  
Greater China  
Region and the  
world

**Mission  
and  
Vision**

**BRAIN**

# BDI ACHIEVEMENT HIGHLIGHTS



**50+** faculty

from

**120+** students

**interdisciplinary** Schools and Departments for  
**16 collaborative R&D projects and 4 joint labs**



Over **HK\$ 80 million & US\$ 1 million**

industrial sponsorship and donation

*with one of the largest government-funded ITF Smart City Project*



**1<sup>st</sup>**

**WeChat**

**Overseas Joint Lab in Asia**



**Line/Naver**

**Overseas Joint Lab in the World**

**NAVER**



Trained **400+** BDT Master Students



**Partnership** with

leading companies



Microsoft



Alibaba Cloud



HKSTP



ByteDance



京东



Hong Kong  
University of  
Applied Science and Technology  
香港科技大學



NVIDIA



xiaomi  
小米机器人

and more...



# BDI Team

At present, there are more than **50 faculty members** and over **120 students** involved BDI's **16 research projects** from

- School of Engineering
- School of Science
- School of Business & Management
- Department of Computer Science and Engineering
- Department of Industrial Engineering and Decision Analytics
- Department of Electronic and Computer Engineering,
- Department of Chemical and Biological Engineering
- Department of Information Systems, Business Statistics and Operations Management
- Department of Mathematics
- Division of Life Science
- Division of Social Science

**Prof Lei Chen**  
**Director of BDI**

**Prof Nancy Ip**  
**Vice-President for  
Research and  
Development**

**Prof Tony F Chan**  
**Former HKUST President**

**Prof Yang Wang**  
**Associate Director of BDI &  
Vice-President for  
Institutional Advancement**

**Dr Tieniu Tan**  
**Vice Minister of the Liaison  
Office of the Central People's  
Government in  
HKSAR**

**Prof Tim Cheng**  
**Dean of Engineering**

**Prof Qiang Yang**  
**Founding Director of BDI**





**Ke Yi 易珂**  
 Professor, Department of  
 Computer Science and  
 Engineering, HKUST

**Albert Chung 鍾志成**  
 Associate Dean of Engineering  
 (UG Studies) & Professor,  
 Department of Computer Science  
 and Engineering, and Department  
 of Chemical and Biological  
 Engineering, HKUST



**Shaojie Shen 沈劭劼**  
 Associate Professor,  
 Department of  
 Electronic and Computer  
 Engineering, HKUST

**I-ming Hsing 邢怡銘**  
 Head & Professor of  
 Department of Chemical  
 and Biological  
 Engineering, HKUST

**Director**

**Lei Chen 陳雷**

Chair Professor,  
 Department of Computer  
 Science and Engineering,  
 HKUST

**Associate Director**

**Yang Wang 汪揚**

Vice-President for  
 Institutional  
 Advancement, HKUST

**Founding Director**

**Qiang Yang 楊強**

Chair Professor,  
 Department of Computer  
 Science and Engineering,  
 HKUST



**Our Team**



**Daniel P. Palomar 鋒西龍**  
Professor, Department of Electronic and Computer Engineering, and Department of Industrial Engineering and Decision Analytics, HKUST



**Brian Mak 麥鑑榮**  
Associate Professor, Department of Computer Science and Engineering, HKUST



**Bertram Shi 施毅明**  
Head & Professor, Department of Electronic and Computer Engineering, HKUST



**Jianfeng Cai 蔡劍鋒**  
Professor, Department of Mathematics, HKUST



**Cameron Campbell 康文林**  
Professor, Division of Social Science, HKUST



**James She 許丕文**  
Adjunct Assistant Professor, Department of Electronic and Computer Engineering, HKUST



**Inchi Hu 胡膺期**  
Chair Professor, Department of Information Systems, Business Statistics and Operations Management, HKUST



**Huamin Qu 屈華民**  
Professor, Department of Computer Science and Engineering, and Department of Electronic and Computer Engineering & Director, Interdisciplinary Programs Office, HKUST



**Hong Xue 薛紅**  
Adjunct Professor, Division of Life Science, HKUST



**Hai Yang 楊海**  
Chair Professor, Department of Civil and Environmental Engineering, HKUST



**Chi Keung Tang 鄧智強**  
Professor, Department of Computer Science and Engineering, HKUST



**Dimitris Papadias 白德善**  
Professor, Department of Computer Science and Engineering, HKUST



**Dekai Wu 吳德愷**  
Professor, Department of Computer Science and Engineering, HKUST



**Dit-Yan Yeung 楊熈仁**  
Head & Chair Professor, Department of Computer Science and Engineering, HKUST



**Fugee Tsung 宗福季**  
Chair Professor, Department of Industrial Engineering and Decision Analytics, HKUST







**Pascale Fung 馮雁**

Professor, Department of Electronic and Computer Engineering & Director, Center for Artificial Intelligence Research, HKUST



**Mingjie Zhang 張明傑**

Adjunct Professor, Division of Life Science, HKUST



**Jiguang Wang 王吉光**

Assistant Professor, Division of Life Science, and Department of Chemical and Biological Engineering, HKUST



**Qiong Luo 羅瓊**

Associate Professor, Department of Computer Science and Engineering, HKUST



**Xiaojuan Ma 麻曉娟**

Assistant Professor, Department of Computer Science and Engineering, HKUST



**Wei Wang 王威**

Assistant Professor, Department of Computer Science and Engineering, HKUST



**Weichuan Yu 余維川**

Professor, Department of Electronic and Computer Engineering, HKUST



**Yangqiu Song 宋陽秋**

Assistant Professor, Department of Computer Science and Engineering, and Department of Mathematics, HKUST



**James Kwok 郭天佑**

Professor, Department of Computer Science and Engineering, HKUST



**Kai Chen 陳凱**

Associate Professor, Department of Computer Science and Engineering, HKUST



**Matthew McKay**

Professor, Department of Electronic and Computer Engineering and, Department of Chemical and Biological Engineering, HKUST



**Nevin Zhang 張連文**

Professor, Department of Computer Science and Engineering, HKUST



**Richard So 蘇孝宇**

Associate Dean of Engineering (Research & Graduate Studies) & Professor, Department of Industrial Engineering and Decision Analytics, and Department of Chemical and Biological Engineering, HKUST





**Jiheng Zhang 張季恆**  
Professor, Department of Industrial Engineering and Decision Analytics, and Department of Mathematics, HKUST



**Raymond Wong 黃智榮**  
Professor, Department of Computer Science and Engineering, HKUST



**Xiaoping Wang 王筱平**  
Head & Chair Professor, Department of Mathematics, HKUST



**Xuhui Huang 黃旭輝**  
Professor, Department of Chemical and Biological Engineering and Department of Chemistry, HKUST



**Kohei Kawaguchi 川口康平**  
Assistant Professor, Department of Economics, HKUST



**Can Yang 楊燦**  
Associate Professor, Department of Mathematics, HKUST



**Kani Chen 陳卡你**  
Professor, Department of Mathematics, HKUST



**Jishan Hu 胡繼善**  
Professor, Department of Mathematics, HKUST



**Angela Wu 吳若昊**  
Assistant Professor, Department of Chemical and Biological Engineering, and Division of Life Science, HKUST



**Yu Hu 胡禹**  
Assistant Professor, Department of Mathematics, and Division of Life Science, HKUST



**Bing-yi Jing 荊炳義**  
Professor, Department of Mathematics, HKUST



**Haibin Su 蘇海斌**  
Associate Professor, Department of Chemistry, HKUST



**Yuan Yao 姚遠**  
Associate Professor, Department of Mathematics, and Department of Chemical and Biological Engineering, HKUST



**BDI**



2015 RMB ¥ 10 million Tencent



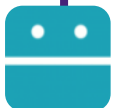
2016 US\$ 1 million *Mr. Raymond Chu*



2015 HK\$ 10 million ITF (Innovation and Technology Fund) Smart Transportation project partnered with **THALES**



2016 HK\$ 20 million ITF (Innovation and Technology Fund) Smart City project partnered with



2018 HK\$ 5 million Ying Ding Education Technology Co., Ltd



2018 HK\$ 2 million Donation

# Industrial Partners and Donation

2018

HK\$ 2.46 million

**NAVER**

2020 RGC-RIF Project

HK\$ 5.6 million

and more...

2019



2018 HK\$ 1 million Space Tactics Asset Management



# OUR LABS



WHAT Lab



BDBI-Machine  
Learning Lab



Smart City Lab

**NAVER**

HKUST-  
NAVER/LINE AI Lab



HKUST-Ying  
Ding Education  
AI Lab

思彼思<sup>®</sup>  
o2o SPACE  
思彼思商業控股(集團)

xiao-i  
小i机器人



高陞創科有限公司  
Accel Innovations Limited

Forgame



# BIG DATA INSTITUTE



**WeChat-HKUST Joint Lab  
on Artificial Intelligence  
WHAT Lab**



李兆基商學大樓  
Lee Shau Kee Business Building



**2015-11-26 WHAT Lab was established in HKUST**

 *Tencent entered into a 5-year research partnership with BDI since late 2015, amounts to RMB10 million in total.*

WeChat and HKUST will jointly conduct Artificial Intelligence (AI) Technology related research and explore the far-reaching frontiers of AI. This collaboration on AI research is expected to be long-term and world-leading. Research areas of WHAT LAB include intelligent robotic systems, natural language processing, data mining, speech recognition and understanding.

Machine Reading aims to develop Machine Learning algorithms that could read and comprehend natural language documents as humans do.

With Machine Reading, natural language information is converted to the form that could be processed by computers, and could be further utilized in applications such as summarization, question answering and dialogue system.

Aims at social networking big data mining and machine learning, natural language processing and robotics research.

- **Natural language processing**
- **Data Mining & Visualization**
- **Video Analysis**
- **Large –Scale Machine Learning**
- **Robotic Application**



WHAT Lab

## Machine Reading: Breakthrough in Natural Chinese Processing

It aims to develop Machine Learning algorithms that could read and comprehend natural language documents as humans do, the technique can be further utilized in applications such as summarization, question answering and dialogue system.

- Natural language processing
- Data Mining & Visualization
- Video Analysis
- Large-Scale Machine Learning
- Robotic Application

据印度报业托拉斯报导，当地时间2日，在巴基斯坦接壤印度的巴方边境口岸瓦格赫发生了一起自杀式炸弹袭击。根据最新消息，这起袭击事件造成了至少55人死亡，其中包括了孩子和安全人员，另有近200人受伤。巴基斯坦官员表示，此次的事件是一起自杀式袭击。



### Human

印巴边境发生自杀式袭击致55人死亡

### Machine

巴基斯坦发生自杀式炸弹袭击事件造成至少55人死亡





## Dialog Robot

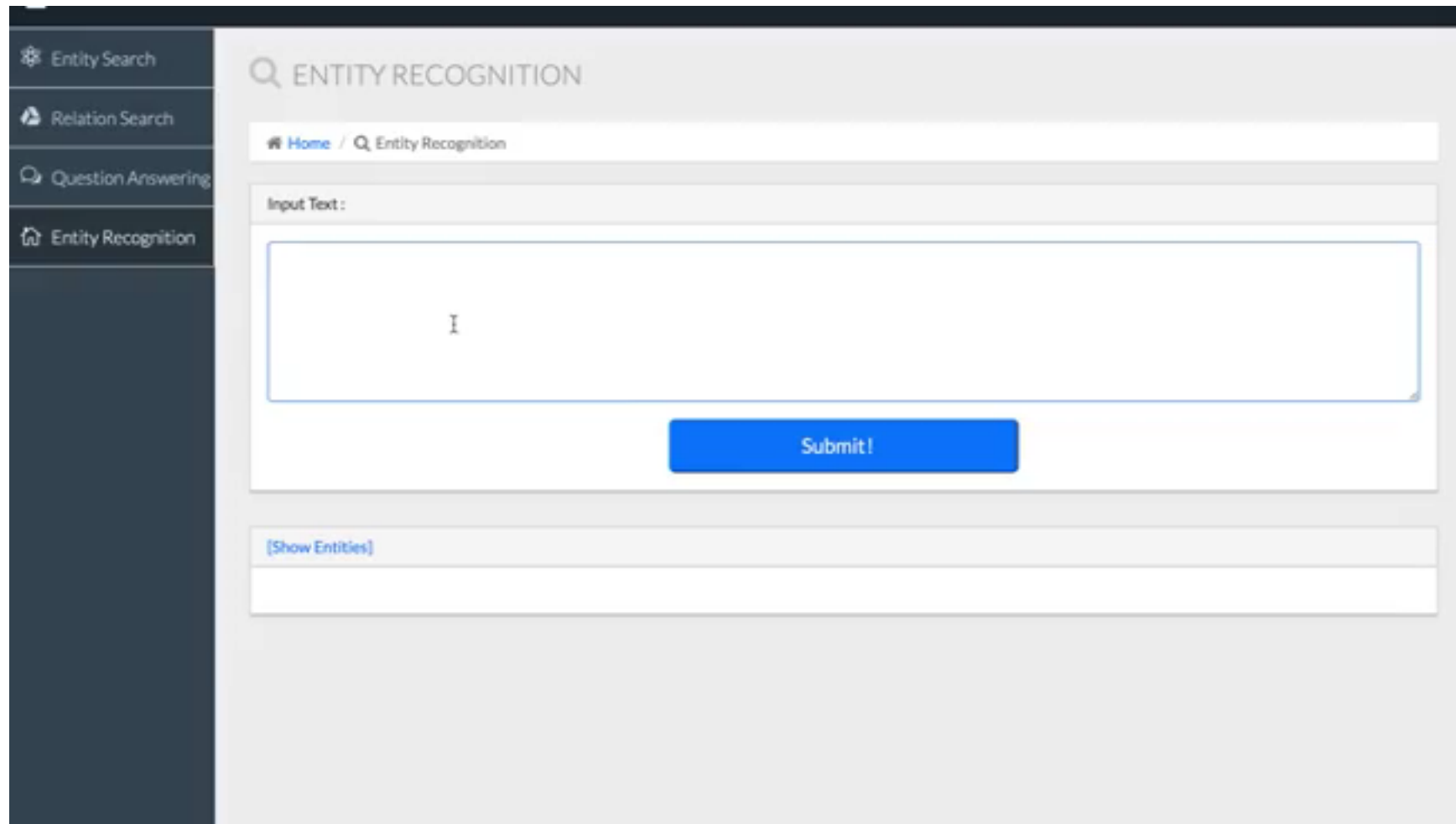
Through the dialogue system, computer information can be translated into natural language description, and human language can also be translated into computer information, so as to achieve human-computer interaction.

Reinforcement and transfer learning, can be used to solve the problem of dialogue system. Reinforcement learning can solve the problem of delayed feedback in multiple rounds of dialogue, while transfer learning can help target areas by using data from similar fields, which can solve the problems of traditional intensive learning data.



# Domain Specific Knowledge Graphs

- Medical Knowledge Graphs



The screenshot shows a web application interface for Entity Recognition. On the left is a dark sidebar with four menu items: 'Entity Search', 'Relation Search', 'Question Answering', and 'Entity Recognition'. The main content area has a header 'ENTITY RECOGNITION' with a magnifying glass icon. Below the header is a breadcrumb trail: 'Home / Entity Recognition'. The main form contains an 'Input Text:' label above a large text input field with a cursor. Below the input field is a blue 'Submit!' button. At the bottom of the form is a '[Show Entities]' button above an empty output area.

# Model-based Global Localization for Aerial Robots using Edge Alignment

Kejie Qiu, Tianbo Liu and Shaojie Shen



High resolution video available at:

<http://www.ece.ust.hk/~eeshaojie/ra12017kejie.mp4>

# WeChat Crowdsourcing Platform



The WeChat Crowdsourcing Platform is designed and developed by WHAT Lab and WeChat team together. Researchers can publish crowdsourcing tasks on the platform and WeChat users can participate in and get monetary rewards. Different mechanisms for task assignment and answer aggregation are equipped and plenty of real tasks from HKUST and Tencent have been published and finished on the platform. It is both a useful tool for data labeling and an industry level crowdsourcing research environment.



# WeSeer System: go online

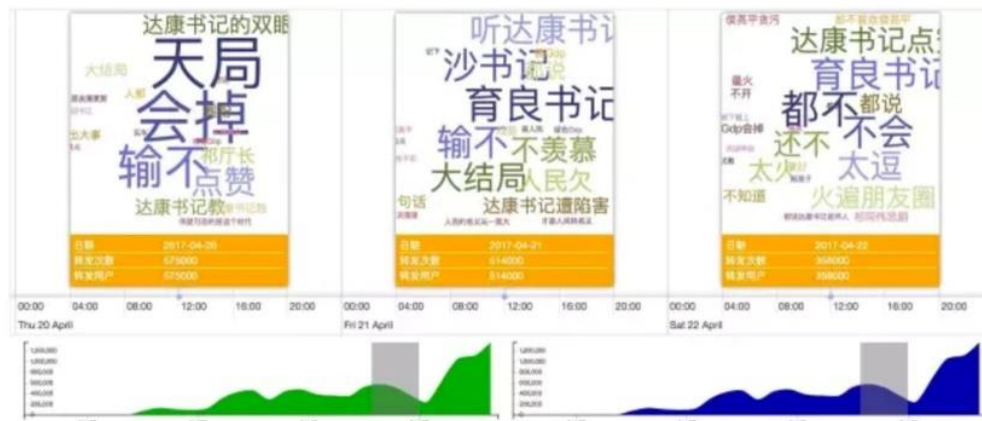


这次微信人工智能实验室 WHAT Lab 用数据可视化算法也看了一回《人民的名义》

大结局的前一周

《人民的名义》相关热词曲线

4月20日~4月22日

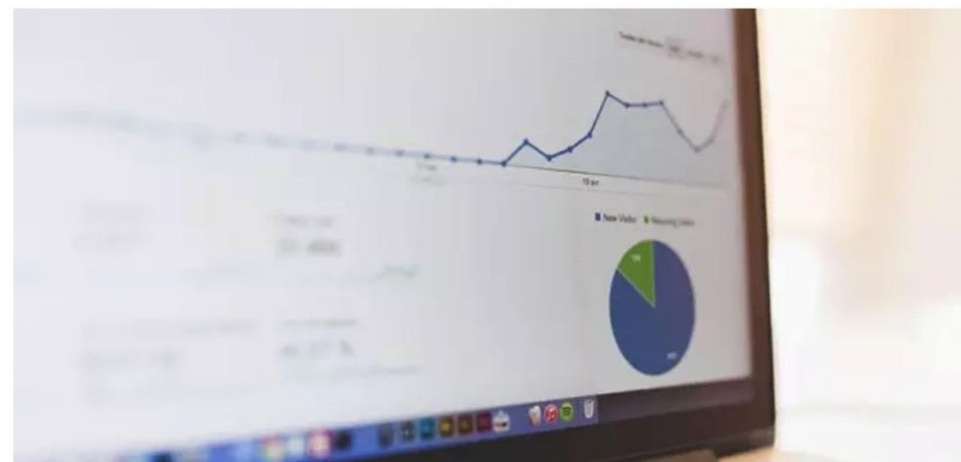


2017年4月20日，带有《人民的名义》标题的微信文章转发次数达到了575000次，朋友圈几乎被以达康书记为首的汉东男子天团所占领，可以看到很多人对大结局充满了期待。

The WeSeer system developed by WHAT Lab was deployed and applied to WeChat, Tencent for daily propagation analysis. The system enable to analysis how official public account article information propagate in WeChat platform from different perspectives, involving a 3D global overview, time-varying propagation view, community detection view, etc.

微信小秘密: 2016年那些10w+文章是怎么刷爆朋友圈的?

(Original) 2016-12-30 WeChat TechPower WeChat TechPower



# BIG DATA INSTITUTE



Big-Data Bio-Intelligence  
and Machine Learning  
Lab  
BDBI



李兆基商學大樓  
Lee Shau Kee Business Building



## **The Big Data for Bio Intelligence Laboratory (BDBI)**

*Donation by Mr. Raymond Chu: US \$1 million*

Devote to the development of advanced machine learning systems and promoting applications of machine learning in bio and genetic areas, aims to become a leading laboratory in the research of big data for biological intelligence and to bridge the knowledge gap between academics and practitioners.



香港科技大學  
THE HONG KONG  
UNIVERSITY OF SCIENCE  
AND TECHNOLOGY

# BIG DATA INSTITUTE



## Smart City Lab



李兆基商學大樓  
Lee Shau Kee Business Building



# Smartcity, a new perspective of Hong Kong

---

A DATA PORTAL SITE CONSTRUCTED BY SMARTCITY GROUP

GET STARTED 



# Smart Ridesharing

With the cooperation of  DiDi (the biggest online car-hailing company in Mainland China), we can utilize the huge amount of data generated by millions of drivers and customers to help the company improve the efficiency of their services and the user experience of both drivers and customers. We help DiDi to design smart vehicle dispatching strategies and dynamic pricing strategies such that the efficiency of the ridesharing service can be improved, and the overall profit of the platform can increase.



Smart City Lab

A fare price?





# E-LEARNING

---

Move Academia towards "Evidence-Based Education":

Stage 1: Multi-Variant Model for Quality Measurement of Course Materials.

Stage 2: Pattern Discovery Algorithms & Outlier Detection Mechanism.



# Objectives of the platform

- Effectively monitoring and directing the crowd in railway stations so that early warnings can be given on potential dangers.
- Ensuring smooth operation of railway transport system by predicting potential major equipment failure.
- The platform will cover a number of frontiers of big data research, including data integration, data analysis, human factors, optimization/visualization, transfer of learning, simulation and operational research.



# BIG DATA INSTITUTE



HKUST- Ying Ding  
Education AI Lab



李兆基商學大樓  
Lee Shau Kee Business Building



## HKUST- Ying Ding Education AI Lab

*Ying Ding Education co. funded HK\$5 million to establish a collaboration with BDI for founding an AI lab.*



# HKUST- Ying Ding Education AI Lab

The Lab focuses on developing collaborative programs for the purpose of strengthening educational research collaborations and development of blended learning initiatives.

- ✓ Development of Blended Learning Platform and Pilot Program
- ✓ Collaboration on Mainland Educational Activities
- ✓ Collaboration on Educational Data Analysis

# BIG DATA INSTITUTE



Established Joint Labs



李兆基商學大樓  
Lee Shau Kee Business Building



# Established Joint Labs



## HKUST-NAVER/LINE AI Laboratory



The lab aims to develop a comprehensive set of research and talent-development programs to pursue cutting-edge research for advancement of AI technology and enrich the learning experience for students.

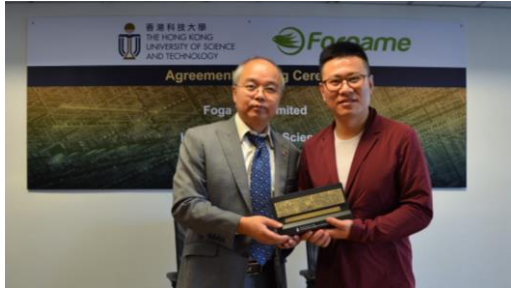


## HKUST-Xiao-i Robot Joint Lab on Machine Learning and Cognitive Reasoning



The Joint Lab will emphasis on integrating machine learning and cognitive reasoning to build the next generation AI system with high credibility and cognitive capabilities. It will also train student talent in AI and foster research and industry collaboration, contributing to the societal and economic development of Hong Kong and the Greater Bay Area.

# Established Joint Labs



## Digital Currency and Blockchain Research Lab

The Lab will support research and training of postgraduate / postdoctoral students related to FinTech and blockchain.



## Health Data Analytics Lab

The Lab will support research related to data science and provide a platform for nurturing young researchers.

# Upcoming Joint Labs



## HKUST-Accel Joint Laboratory on Internet of Things (IoT)

高陞創科有限公司  
Accel Innovations Limited

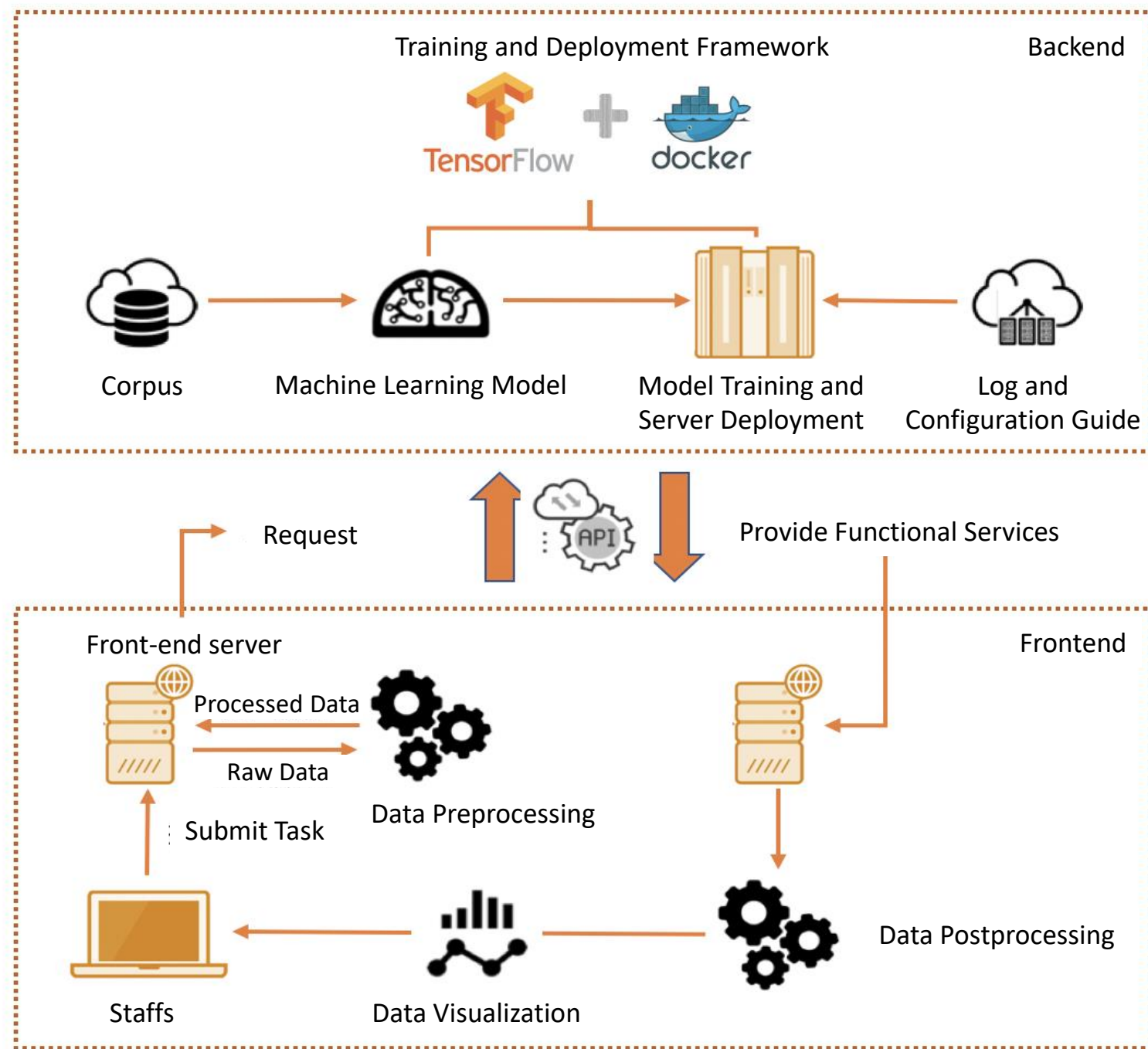
# NEW PROJECT!



Guangdong  
Grid Co.

## Intelligent Document Assistance System

- New word discovery based on left and right entropy and internal solidification
- Correction of typos based on neural network
- Research on entity recognition model based on neural network
- Picture text detection and recognition algorithm
- Seal extraction and recognition algorithm



# NEW PROJECT!

# Intelligent Document Assistance System

localhost:8000

 **中国南方电网**  
CHINA SOUTHERN POWER GRID

综合类业务智能辅助系统

- 智能辅助
- 系统配置

## 导航页

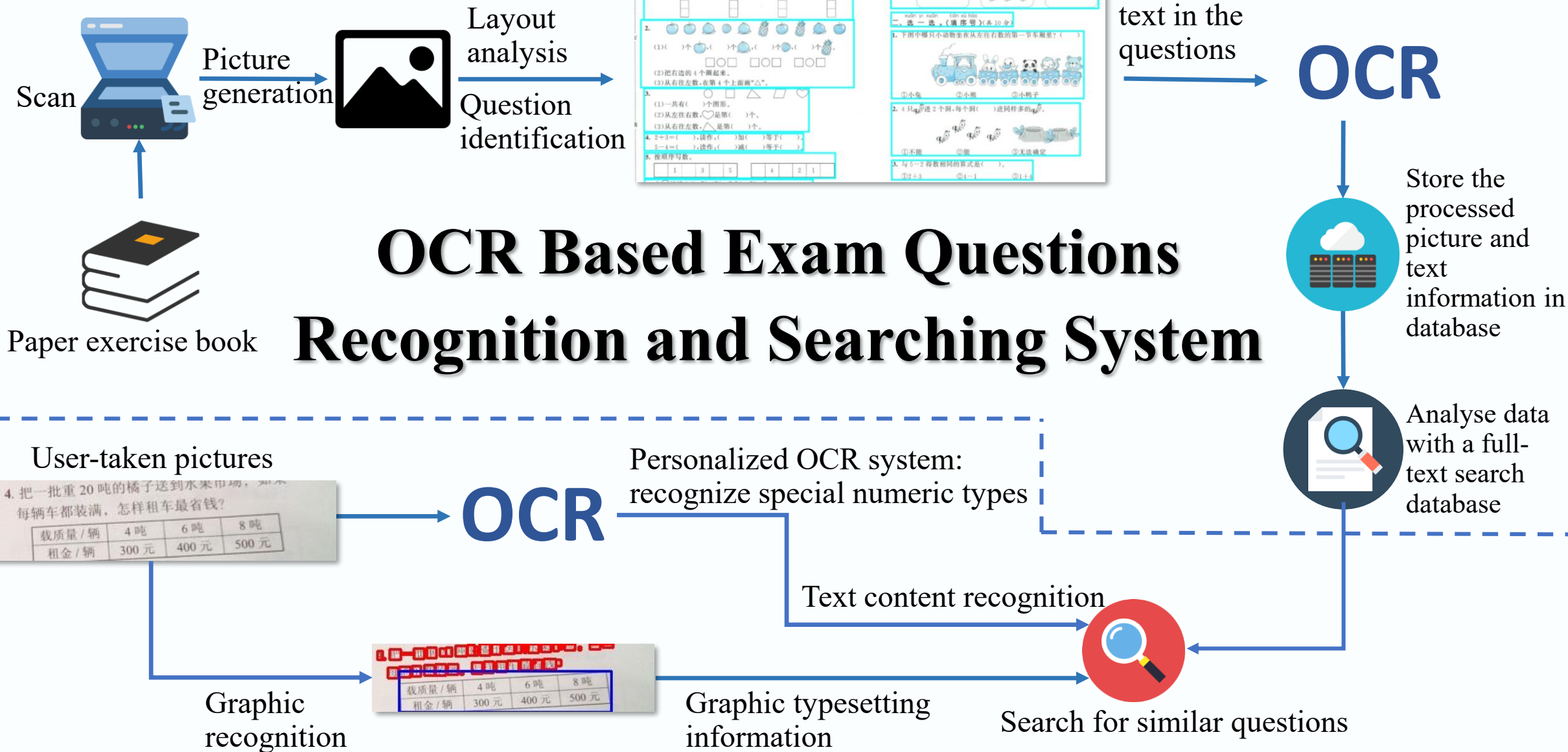
### 智能辅助

科技奖励形式审查 点击进入	科技项目立项申请书形式审查 点击进入	智能查重 点击进入
专家推荐 总览 专家页	项目分类 点击进入	智能秘书 点击进入

### 系统设置

科技奖励形式审查配置 点击进入
--------------------

# NEW PROJECT!





## Big Data and AI Day



## BigDatathon



**Data Science and Analytics Webinar Series 2021**

**State of Permissionless and Permissioned Blockchains: Myths and Reality**

Date: 1 Feb 2021 (Mon)  
 Time: 18:00 – 18:50 (HKT, UTC+08:00)  
 Venue: Online via Zoom  
 (Link to be provided upon registration)

REGISTER NOW

Prof. C. Mohan  
 Show Valley Professor  
 National University of Singapore  
 Distinguished Visiting Professor  
 Tsinghua University, China  
 Consultant (Microsoft, IBM)  
 Advisor: Global Health  
 e-Governance Agency & Kerala  
 Blockchain Academy, India  
 Fellow of the British Academy, UK

## Distinguished Lectures, Seminars, Workshops



## FinTech Forum

# Social Impact

Organize Distinguished Lectures, Seminars, Workshops, Competitions, Forums to facilitate knowledge transfer

## Xiao-i and HKUST Launch Joint Laboratory on Machine Learning and Cognitive Reasoning

### 科大伙內地AI龍頭 研發粵語聊天機械人

左起：陳繁昌、朱慧恒、副校長(研發及研究生教育)李行偉、楊強合照留影。  
 科大供圖



圖1-1 - 科大工學院院長鄭光廷(左二起)、科大副校長(研究及發展)華玉..... (林穎茵攝)

# Social Impact

BDI pursue to bring positive influence to the community and lead the tread in top technology field

## HKUST Establishes Laboratory on Big Data for Bio Intelligence

### 科大設大數據生物智能實驗室



左起：陳繁昌、朱慧恒、副校長(研發及研究生教育)李行偉、楊強合照留影。  
 科大供圖

香港文匯報訊 (記者 高鈺) 香港科技大學昨正式成立大數據生物智能實驗室，為生物學及醫療保健方面設計大數據分析方案，實驗室將由科大新明工程學教授、計算機科學及工程學系講座教授兼系主任楊強，及數學系講座教授兼系主任汪揚共同領導。

科大校長陳繁昌特別鳴謝實業家朱慧恒的捐助，又指大數據的應用將會為人類的生活帶來革命性的轉變，有關研究是該校策略發展方向之一，而隨着實驗室的成立，他深信科大能為大數據研究的迅速發展帶來新見解。

大數據生物智能實驗室的研究範疇包括「深度學習方案」，即透過豐富功能描述機器的學習問題，從而讓電腦作出決定；以及能讓電腦模型輕易地在不同領域中應用的「直推式遷移學習」。實驗室亦會專注研究基因養殖，令過程更為自動化和易於使用，以及配



人民網 >> 港澳

## 香港致力打造大数据驱动的智慧城市

2016年06月29日 12:42 来源：新华社

分享到：

原标题：香港致力打造大数据驱动的智慧城市

“我们的口号是要把香港打造成大数据驱动的智慧城市。”香港科技大学计算机科学与工程学系主任杨强对新华社记者说，在他的牵头下，科大组织了一批专家开展智慧城市建设和大数据的应用。

香港特区政府长官梁振英在《2016年施政报告》中也提到，特区政府将与科研及公私营机构共同研究建设智慧城市。特区政府创新及科技局(创科局)将负责制定智慧城市的数码架构和标准。

创科局回应记者关于香港智慧城市建设构想时表示，将于2016年下半年开展一项顾问研究，为香港制定一个整体框架作为智慧城市发展蓝图，研究范围包括策略、发展计划、管治安排、数码架构和标准、公私营合作模式等。目标是香港制定一个至2030年的智慧城市长远发展计划，利用创新及科技解决面对的都市问题，并提升城市管理和改善市民生活质量。顾问报告预计于明年4月完成。

hknet 互聯網+ 2018年4月13日 星期五

Net+ 版歡迎讀者提供網上成功淘金故事，或e-Marketing好橋，請電郵至netplus@hknet.com

**首度合作**

# LINE 夥科大設 AI 實驗室

開展中文客服項目 鋪路進軍中國

**人工智能平台 Clova**  
 可處理文字、語音及圖像搜索，如忘記電影名稱，用戶輸入簡單情節描述，平台可找出電影；用戶拍攝貓的照片，平台可說出貓品種。  
 秘書功能，作天氣預報、安排行程、推薦音樂等。  
 目前支援韓文及日文，正開發支援法文及西班牙文。

**智能喇叭 Clova Wave 及 Clova Friends**  
 去年10月及12月分別推出兩款智能喇叭 Clova Wave 及 Clova Friends，為搶攻日本 AI 市場領銜。

**與科大成立人工智能實驗室**  
 Naver及LINE出資246萬元與科大成立人工智能實驗室，科大將開設聊天機械人、中文人工智能助理、客服等項目。

資料來源：綜合受訪者及本報資料室

▲ 兩韓搜尋引擎公司 Naver 及子公司 LINE，與科大合作成立人工智能實驗室。Naver 行政總裁韓聖源（前排右）稱，公司希望吸收全球創新 AI 意念，而科大 AI 研究獲全球認可，因而選擇與科大合作。（林宇翔攝）

▲ 科大 AI 研究獲全球認可，因而選擇與科大合作。（林宇翔攝）

▲ 科大 AI 研究獲全球認可，因而選擇與科大合作。（林宇翔攝）

## World Experts in Big Data and Artificial Intelligence Gather at HKUST to Share Insights into Future

26-05-2017

The Big Data Institute (BDI) of the Hong Kong University of Science and Technology (HKUST) today (Friday) organized its first Big Data and AI Day, playing host to a stellar assemblage of world top academics and industry celebrities in the realm of Big Data and Artificial Intelligence (AI), sharing information and insights into the future of this trendy field.

Since the establishment of the BDI in 2016, its first Big Data and AI Day drew a learned audience of over 500 guests, including local and overseas academics, leaders in the Big Data and AI-related industries, as well as students from various tertiary institutions in Hong Kong and abroad. The overwhelming attendance attested to the key role of HKUST's research in these fields.

Dr Tieniu Tan, Vice Minister of the Liaison Office of the Central People's Government in Hong Kong, officiated at the symposium. In his keynote speech on big visual data analysis, Dr Tam said, "Hong Kong is a great place for Big Data and AI, and Big Data and AI are a great hope for Hong Kong, making the place smarter and stronger."

Delivering the opening remarks, President Chan said, "Research into Big Data and AI is one of HKUST's strategic



Dr Tieniu Tan, Vice Minister of the Liaison Office of the Central People's Government in HKSAR (7th from right), HKUST President Prof Tony F Chan (6th from right), Vice-President for Research and Graduate Studies Prof Nancy Ip (7th from left), Dean of Engineering Prof Tim Cheng (5th from left), and other attendees.

## HKUST Becomes the First University Partner Worldwide with NAVER/LINE to Set Up AI Lab

Language Processing, 兩款 AI 產品，前者主要處理語言理解、AI 對話，後者解決語音、臉孔辨識，如用戶忘記電影名稱，簡單向 Clova 描述電影情節，AI 便可找出來。

▲ 韓母公司 Naver 投放 246 萬 Naver 行政總裁韓聖源出席開幕儀式時

▲ 韓母公司 Naver 投放 246 萬 Naver 行政總裁韓聖源出席開幕儀式時

▲ 韓母公司 Naver 投放 246 萬 Naver 行政總裁韓聖源出席開幕儀式時

## 港科大聯手微信建「智能實驗室」 HKUST and WeChat Establish Joint Lab on Artificial Intelligence Technology

▲ 楊強介紹，香港科技大學在人工智能，機器人大數據領域在世界上都是處於領先地位。機器學得多項世界比賽冠軍，包括 ACM KDDCUP 大賽、諾基亞大賽以及 ImageNet。在遷移學習、統計機領域也引領世界研究潮流。學校研究的情感機器人被「科學美國人」報道，大學出來的創新公司包括港大雲集國際著名協會的院士，包括幾十名 IEEE Fellow。楊強本人也是國際高等人工智能協會（AAAI 15 年國際人工智能大會的主席，以及 IEEE 大數據期刊的創始主編。



专访微信人工智能实验室： 社交网络已成为人工智能的一个热点

作者 杜小芳 发布于 2015年12月19日。估计阅读时间：不到一分钟 | 讨论

分享到： 微博 微信 Facebook Twitter 有道云笔记 邮件分享

# Social Impact

BDI pursue to bring positive influence to the community and lead the trend in top technology field





# HKUST BDI



**Benefit** the Greater Bay Area (HK / Macau / Guangdong), Greater China Region and the world

**Industrialize** scientific achievements and create long-term impact to the world  
**Aspire** innovation and breakthrough

# BRAIN

**Recruit** talents in academia  
**Navigate** research development



# BIG DATA TO BIG DREAMS

Big data is the oil of 21<sup>st</sup> century, however, unlike the oil, its reserve grows exponentially every year

JOIN BDI, ignite your future

HKUST Big Data Institute