

Hiking Social Network

Group Members: Chan Ka Yue, Cheung Shing Cheong

Supervisor: Professor James Kwok

Motivation

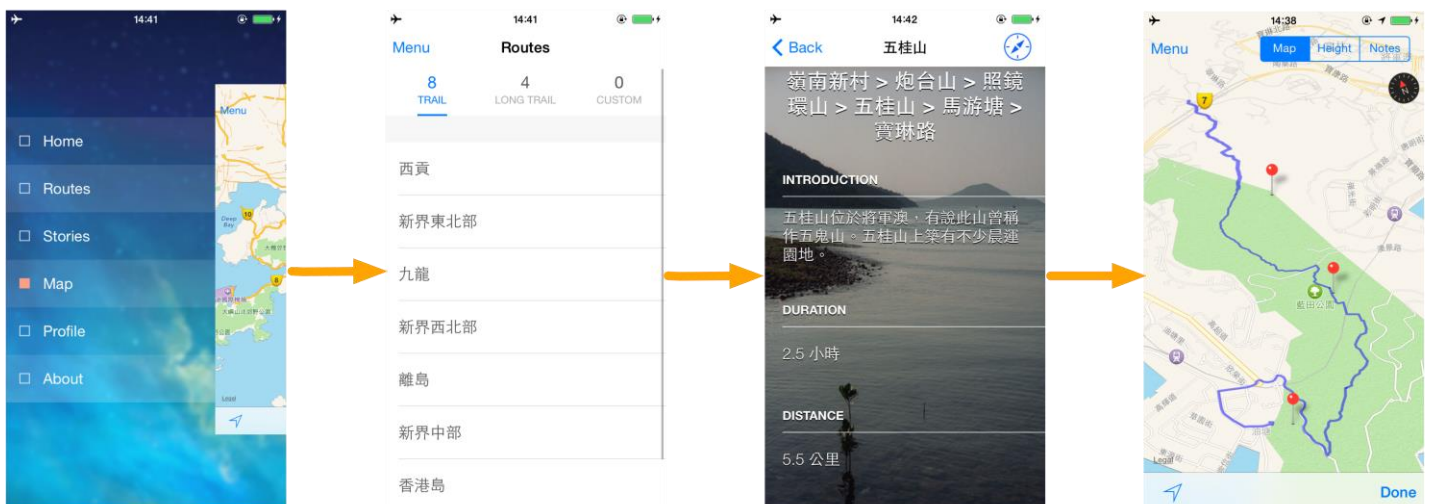
Hong Kong has some of the most beautiful and most accessible hiking trails of any major city. Hiking in Hong Kong is enjoyable and easy. However, there is no existing social platform for hiking enthusiasts to sharing their journey and experience.

Objective

This project aims to develop a social hiking platform that allows hiking enthusiasts do both planning and take benefits from it during hiking. This platform consists of website and iOS application for iPhone. User can browse recommended routes, do customized planning and invite friends for hiking, getting recommendations or guidelines during travel, and creating travel diary with photo after hiking.

hiketime

It is an iOS application that allows user to browse trails, record and get guidelines during hiking, and create a story and share to friends after hike.

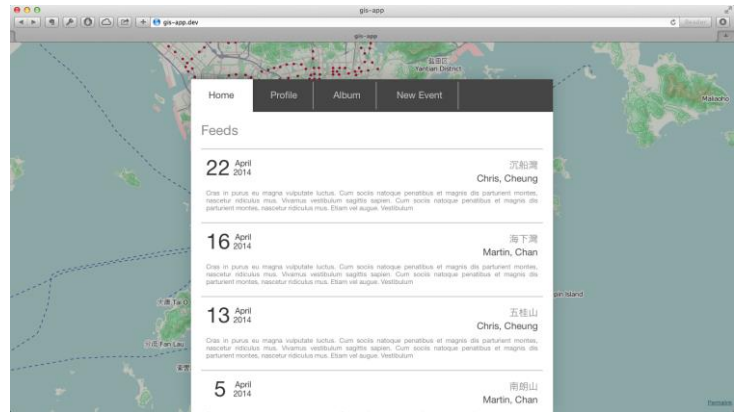
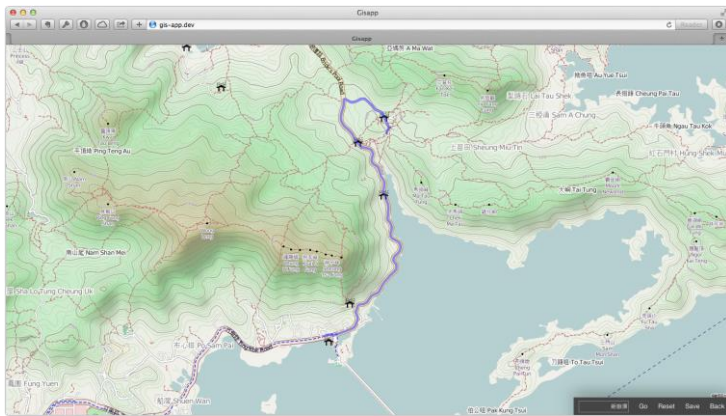


Hiketime Website

This is a social network site for anyone who have passion in hiking. It mainly work for event planning.

Features:

- Customize routing
- Predefined routing
- Create hiking event
- Invite Friends
- Profile
- Album
- Timeline New feeds

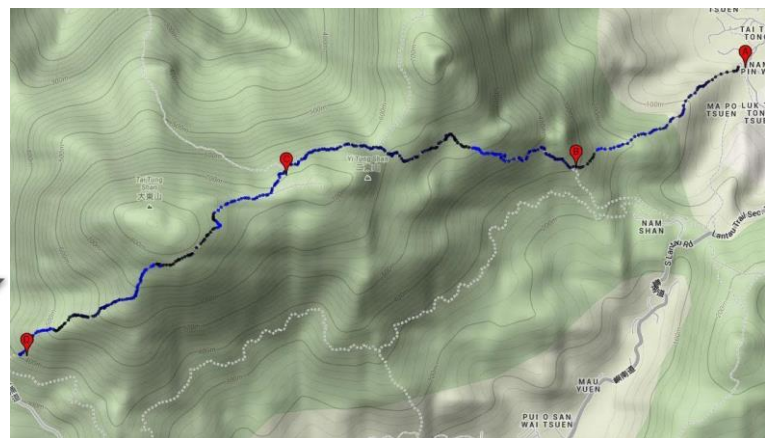


Shortest Path

Elevations



- Nearest Source Path (spS)
- Nearest Target Path (spT)
- Shortest Path of S,T (spU)
- Shortest Path between S,T (spST)
- Source's Closest Point (cpS)
- Target's Closest Point (cpT)
- ★ Target (T)
- ◆ Source (S)

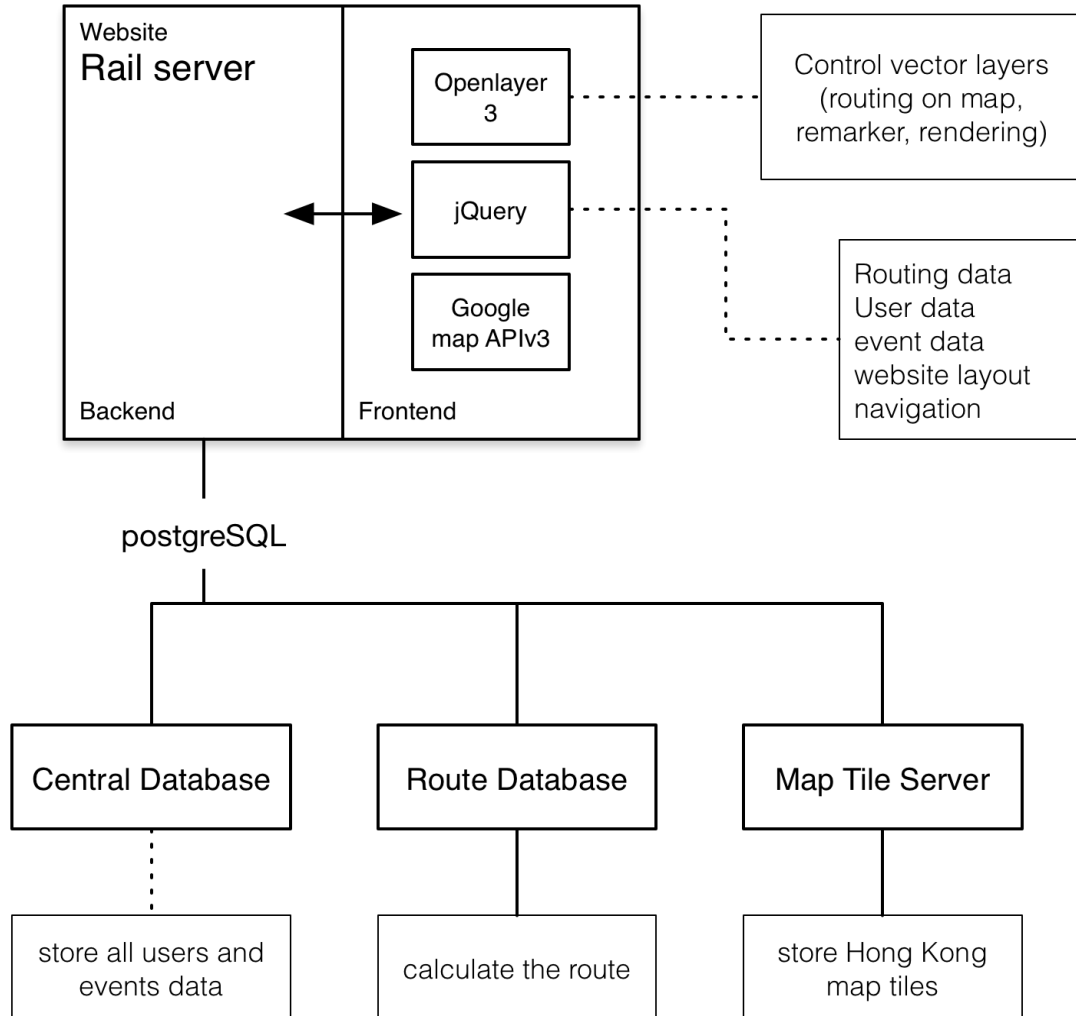


Gradual route is symbolized as an important feature of the website. By using the Google Elevations Service API, it queries all the points of the routes. And the elevation data of each point would be translate into a RGB color code.

Implementation

Web Resource API

RESTful Web Resource API provides a lot of functionality that allows Website and IOS apps to query hiking data and user data in http protocol.



Routing Service

Combinations of postgresql, postGIS ,pgRouting and Rails

